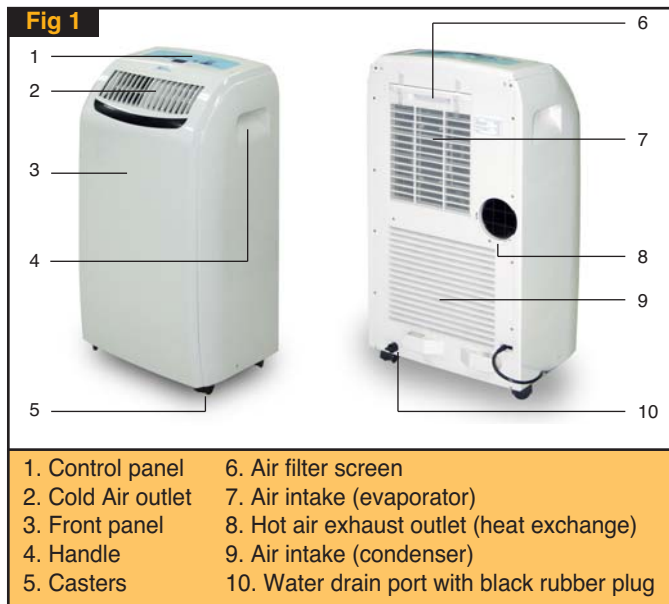
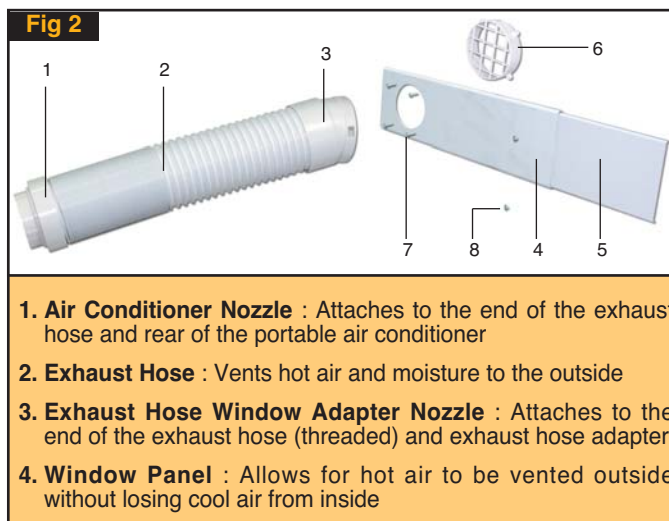


# Quick Setup Instructions

- A. Unpack your new Portable Air Conditioner and let the machine stand upright for 2 hours before starting.
- B. Make yourself familiar with your new Portable Air conditioner.

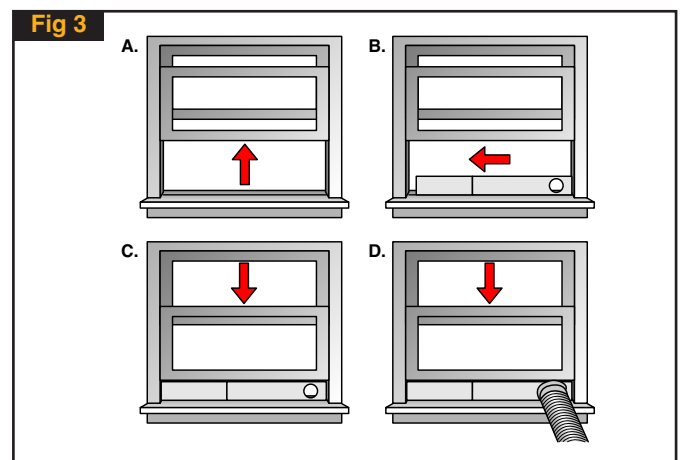


- C. Unpack all parts listed below as shown in Fig 2. If any parts are missing do not return this product to the place of purchase. Please visit our website [www.royalsovereign.com](http://www.royalsovereign.com) and click on the "Customer Support" tab and "Make a Request" to request missing parts or call 1-800-397-1025 and press option # 4 to order these parts.
- D. Position your new Portable Air Conditioner in its desired location.
- E. Assemble the window kit as shown below. (Fig 2)
- F. Window kit parts:



- 5. Window Panel Extension : Adjusts window panel to fit window opening
- 6. Exhaust Hose Adapter : Attaches to window panel
- 7. Exhaust Hose Adapter Screws : Use these screws to attach the exhaust hose adapter to the window panel
- 8. Window Panel Extensions Screws : Attaches the window panel to the window panel extension

- G. Attach exhaust hose adapter (6) to the window panel (4) with four supplied screws (7) as shown in Fig 2.
- H. Open the window.(Fig 3a)
- I. Place the window panel in the window, extending it to fit the width of the window (Fig 3b). The panel can be locked at the correct width by inserting and tightening the window panel extension screws (8) (Fig 2). If panel cannot be fully extended, it can be cut to fit. If panel does not cover the entire space and extra panel can be purchased. See line C
- J. Close the window (Fig 3c).
- K. Attach the air conditioner nozzle (1) (Fig 2) and exhaust hose window adapter nozzle (3) (Fig 2) to the exhaust hose (2) (Fig 2) by turning them clockwise on each end of the exhaust hose.
- L. Insert the air conditioner nozzle (1) (Fig 2), exhaust hose (2) (Fig 2) and exhaust hose window adapter nozzle (3) (Fig 2) which are now combined (as instructed in item K above) to the hot air exhaust outlet (8) (Fig 1) by turning clockwise to lock in place.
- M. Insert exhaust hose window adapter nozzle (3) (Fig 2) onto window adapter (6) (Fig 3d).



- N. Make sure the rubber drain plug (10) (Fig 1) is inserted into the water drain port (10) (Fig 1) on the rear of the machine.
- O. Setup is now complete. Plug in machine. Press power on button.
- P. Refer to owner's manual for detailed instructions.